

ELEMENT™ 2" CYLINDER

ADJUSTABLE CYLINDER

Enhance your lighting with the ELEMENT 2" Adjustable Cylinders. This versatile fixture offers adjustable tilt 0° to 90° and 360° rotation for precise light direction. Highlight architectural features and illuminate specific areas with ease.

Customize your lighting effects using interchangeable optics. Enjoy a soft, uniform appearance and reduce glare with the recessed LED design. Choose between static white or warm dim lighting to create the perfect ambiance.

- Aiming: 0°-90° tilt and 360° rotation
- Field interchangeable optics: 20°, 30°, 40°, and 60°
- 1-step static white and 2-step warm dim color binning
- Available in 2" and 3" fixed and adjustable options; 3" available in wall wash
- Flush, surface, conduit, and pendant mounting options
- Several lens and louver options including Solite Soft Focus
- Decorative trims available in solid natural brass, crystal, walnut, weathered oak wood, and alabaster



SHOWN IN BLACK

LUMEN MULTIPLIER (CRI/CCT)

CCT	80 CRI MULTIPLIER	90 CRI MULTIPLIER
2700K	—	0.98
3000K	—	1.00
3500K	1.21	—

Lumen output will vary by CCT and CRI. See photometric charts for output information. Data in chart reflects 3000K/90 CRI values, unless otherwise noted.

SPECIFICATIONS

WATTAGE	STATIC WHITE		WARM DIM	
	Lumens	Efficacy	Lumens	Efficacy
12W	865	78	699	59
15W	1064	72	888	56
CRI	80+, 90+		90+	
CCT	2700K, 3000K, or 3500K		3000K - 1800K	
COLOR CONSISTENCY	1-step		2-step	
VOLTAGE	120V or 277V			
DIMMING ¹	Standard reverse-phase, forward-phase, TRIAC, and 0-10V dimming down to 1% eldoLED 0-10V Linear & Logarithmic UNV down to 0.1% eldoLED DALI-2 down to 0.1% Lutron Hi-lume 0.1% EcoSystem			
POWER SUPPLY	Constant current driver with +0.9 power factor and +80% efficiency			
BEAM SPREAD	Interchangeable optics: 20°, 30°, 40°, or 60°			
ADJUSTABILITY	0°-90° tilt, 360° rotation			
CEILING APPEARANCE	Flush mount Surface mount (canopy) Pendant mount (canopy) Conduit mount (j-box)			
CONSTRUCTION	Cylinder: Aluminum			
FINISH	White or Black			
GENERAL LISTINGS	ETL Listed. Damp Location			
CALIFORNIA TITLE 24	Registered CEC appliance database. Complies with CEC 2019 Title 24 Part 6 (JA8-2016, JA8-2019) (for 90 CRI versions).			
L70	50,000 hours min			
WARRANTY ²	5 years			

Data in chart reflects 3000K/90 CRI values, unless otherwise noted.

Ordering grids available on page 2.

¹See visualcomfort.com for dimmer compatibility.

²Visit visualcomfort.com for specific warranty limitations and details.



©2024 Visual Comfort & Co. All rights reserved. The Visual Comfort & Co. logo is a registered trademark. Visual Comfort & Co. reserves the right to change specifications for product improvements without notification.

UPDATED 2/7/24

ELEMENT™ 2" CYLINDER

ADJUSTABLE CYLINDER

ORDERING GRIDS

CYLINDER

PRODUCT	MOUNTING	OUTPUT	CRI/CCT	BEAM SPREAD	FUNCTION	REFLECTOR	DRIVERS ⁵	CYLINDER FINISH
EC2R ELEMENT CYLINDERS 2" ROUND	F FLUSH MOUNT ¹	-12 12W	835	80 CRI, 3500, 1-STEP	2 20°	A ADJUSTABLE	N NO LENS	-B BLACK
	S SURFACE MOUNT (CANOPY)	-15 15W	927	90 CRI, 2700K, 1-STEP	3 30°	L LENSED/DECORATIVE ⁴	L LENSED/ UNIVERSAL PHASE/0-10V 1% ⁶	-W WHITE
	P PENDANT MOUNT (CANOPY) ²		930	90 CRI, 3000K, 1-STEP	4 40°		-ELDO ELDOLED 0.1% 0-10V LINEAR	
	C CONDUIT MOUNT (J-BOX) ³		9WD31	90 CRI, WARM DIM, 3000-1800K, 2-STEP	6 60°		-ELDOA ELDOLED 0.1% 0-10V LOGARITHMIC -ELDD ELDOLED 0.1% DALI-2 -HLECO LUTRON HI-LUME 0.1% ECOSYSTEM	

EC2R	-			A				
------	---	--	--	---	--	--	--	--

For dimming details, refer to dimmer compatibility chart.

¹F - Flush mount includes an adapter plate to convert junction box before ceiling install and a remote driver enclosure for all driver options.

²P - Pendant mount requires selection of Pendant Stem Accessory Kit. See part numbers below.

³C - Conduit mount includes a remote driver enclosure for all driver options.

⁴Standard Cylinder Reflectors do not accommodate lens accessories. Lens/louvers and decorative accessories ordered separately (see part numbers below). Limit 1 optical element. Lenses and louvers are not compatible with decorative accessories. To use with a lens/louver accessory order ELC2LK kit. To use with a decorative accessory order EC2DA kit and specify finish.

⁵The drivers in ELEMENT Cylinders must be located either in the junction box or in a remote location. Reference the Driver J-Box Compatibility Chart below for guidance. When the driver is listed as Remote, a remote enclosure that is 4" x 8" x 1.8" is provided. All non-UNV drivers are remote. All flush and conduit drivers are remote.

⁶UNV - Universal dimming is reverse-phase, forward-phase, TRIAC, and 0-10V. 277V is only compatible with 0-10V dimming.

DRIVER J-BOX COMPATIBILITY CHART

	12W AND 15W UNIVERSAL	12W AND 15W LUTRON/ELDOLED
2" FLUSH MOUNT		
4" OCTAGON	REMOTE	REMOTE
4" SQUARE		
20 CU IN CEILING BOX		
2" SURFACE MOUNT (CANOPY) PENDANT MOUNT (CANOPY)		
4" OCTAGON	FITS IN J-BOX	REMOTE
4" SQUARE		
20 CU IN CEILING BOX		
2" CONDUIT MOUNT (J-BOX)		
4" OCTAGON	REMOTE	REMOTE
4" SQUARE		
20 CU IN CEILING BOX		

REPLACEMENT OPTICS

PRODUCT	BEAM SPREAD
353LEDGATOPT	20 20°
	30 30°
	40 40°
	60 60°
353LEDGATOPT	

PENDANT STEMS

PRODUCT ¹	LENGTH ²	FINISH
ECPS	12 12"	B BLACK
	24 24"	W WHITE
	36 36"	
	48 48"	
	60 60"	
	72 72"	
ECPS		

¹Required for Pendant Mount only.

²Consult Quotes Department for custom lengths to the inch.

LENS/LOUVER KIT

PRODUCT ¹	TYPE	REFLECTOR FINISH
ELCY2LK	SF SOLITE SOFT FOCUS LENS	B BLACK
	SB SANDBLASTED LENS	W WHITE
	LL LINEAR SPREAD LENS	
	EC EGGCRATE/HEXCELL LOUVER	

ELCY2LK

¹Required for use with lenses or louvers. Kit includes a reflector and one lens or louver. For use with Lensed Reflector Cylinders or to convert a No Lens Reflector. Replacement lenses and louvers can be ordered separately. ELEMENT Cylinders accommodate one lens or louver. Lens/louver kit is not compatible with decorative accessories.

CYLINDERS DECORATIVE ACCESSORIES

PRODUCT ¹	FINISH
EC2DA	SNB SOLID NATURAL BRASS
	CLC CLEAR CRYSTAL
	WAW WALNUT WOOD
	WOW WEATHERED OAK WOOD
	ALB ALABASTER

EC2DA

¹For use with Lensed Reflector Cylinders or to convert a No Lens Reflector Cylinder. Lenses and louvers are not compatible with decorative accessories.

VAULTED CEILING ADAPTER

PRODUCT	FINISH
ELCVA PENDANT MOUNT ¹	B BLACK W WHITE

¹For use with Pendant Mount Cylinder with or without Stems. Accommodates slopes up to 45 degrees. Adds 1.7" to the overall length of the stem.

REPLACEMENT LENSES FOR LENS/LOUVER KIT

PRODUCT ¹
MOCSF SOLITE SOFT FOCUS LENS
MOCSB SANDBLASTED LENS
MOCLL LINEAR SPREAD LENS
MOCEC EGGCRATE/HEXCELL LOUVER

¹Lenses and louvers are not compatible with decorative accessories.

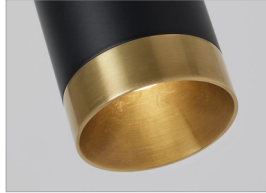
ELEMENT™ 2" CYLINDER

ADJUSTABLE CYLINDER

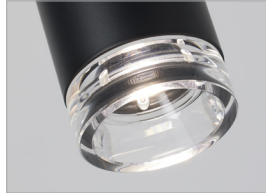
DECORATIVE ACCESSORIES



SOLID NATURAL BRASS



CLEAR CRYSTAL



WALNUT WOOD



WEATHERED OAK WOOD



ALABASTER

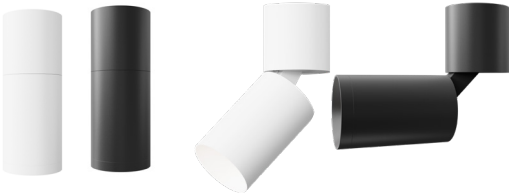


ELEMENT™ 2" CYLINDER

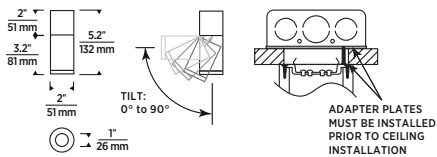
ADJUSTABLE CYLINDER

CYLINDERS

FLUSH MOUNT



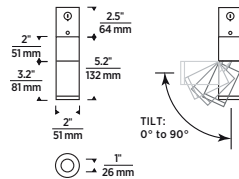
WHITE OR BLACK; TILTS UP TO 90°



CONDUIT MOUNT (J-BOX)



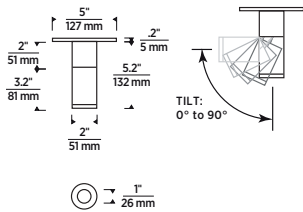
WHITE OR BLACK; TILTS UP TO 90°



SURFACE MOUNT (CANOPY)



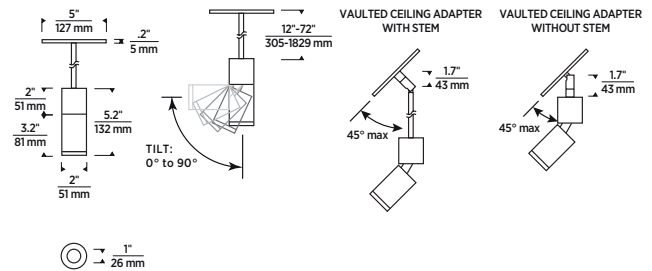
WHITE OR BLACK; TILTS UP TO 90°



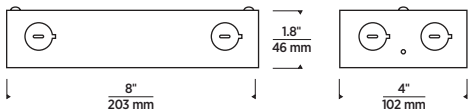
PENDANT MOUNT (CANOPY)



WHITE OR BLACK; TILTS UP TO 90°



REMOTE DRIVER J-BOX



ELEMENT™ 2" CYLINDER

ADJUSTABLE CYLINDER

PHOTOMETRICS

Description: 2" Cylinder Fixed
 20° Beam
 90 CRI, 3000K

Input Power (Watts): 15.19
 Input Power Factor: 0.99
 Absolute Luminous Flux (Lumens): 908
 Lumen Efficacy (Lumens per Watt): 60

Output difference between CCTs - 5%, CRIs - 15%.

Description: 2" Cylinder Fixed
 30° Beam
 90 CRI, 3000K

Input Power (Watts): 14.8
 Input Power Factor: 0.98
 Absolute Luminous Flux (Lumens): 944
 Lumen Efficacy (Lumens per Watt): 64

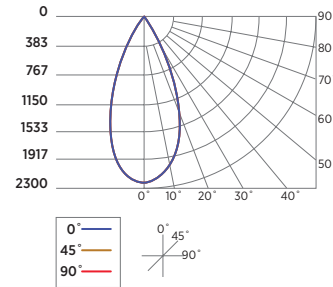
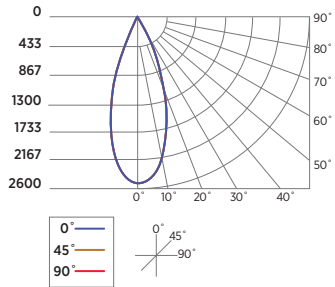
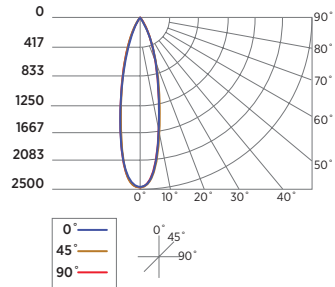
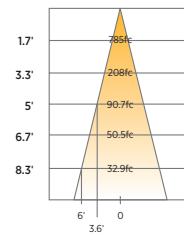
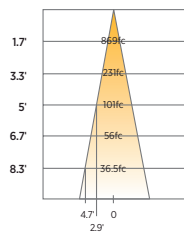
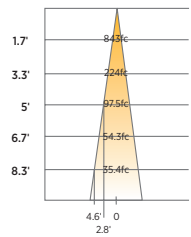
Description: 2" Cylinder Fixed
 40° Beam
 90 CRI, 3000K

Input Power (Watts): 14.8
 Input Power Factor: 0.98
 Absolute Luminous Flux (Lumens): 1063
 Lumen Efficacy (Lumens per Watt): 72

ANGLE	0°	45°	90°
0°	2437	2437	2437
5°	2227	2218	2214
10°	1764	1781	1778
15°	1268	1276	1287
20°	821	835	850
25°	459	466	472
30°	239	243	242
35°	133	134	129
40°	86	86	81
45°	57	57	52
50°	40	42	36
55°	23	24	20
60°	16	16	13
65°	12	12	9
70°	6	7	5
75°	4	5	3
80°	3	3	3
85°	2	2	2
90°	0	0	0

ANGLE	0°	45°	90°
0°	2513	2513	2513
5°	2396	2371	2397
10°	1899	1896	1982
15°	1236	1241	1382
20°	686	713	826
25°	370	382	444
30°	203	202	231
35°	108	111	121
40°	61	62	70
45°	35	36	41
50°	26	26	29
55°	17	16	17
60°	10	10	11
65°	8	7	8
70°	3	3	3
75°	2	2	2
80°	1	1	1
85°	1	1	0
90°	0	0	0

ANGLE	0°	45°	90°
0°	2267	2267	2267
5°	2185	2167	2186
10°	1945	1923	1968
15°	1562	1532	1591
20°	1094	1084	1118
25°	668	653	673
30°	344	330	342
35°	158	156	159
40°	72	68	75
45°	34	33	35
50°	18	18	19
55°	10	10	11
60°	7	7	7
65°	5	5	5
70°	2	2	2
75°	1	1	1
80°	1	1	1
85°	0	0	0
90°	0	0	0



ELEMENT™ 2" CYLINDER

ADJUSTABLE CYLINDER

PHOTOMETRICS, CONT.

Description: 2" Cylinder Fixed
 60° Beam
 90 CRI, 3000K

Input Power (Watts): 14.9

Input Power Factor: 0.99

Absolute Luminous Flux (Lumens): 1150

Lumen Efficacy (Lumens per Watt): 77

ANGLE	0°	45°	90°
0°	1356	1356	1356
5°	1315	1311	1328
10°	1199	1209	1243
15°	1041	1059	1107
20°	858	871	933
25°	672	678	726
30°	489	489	526
35°	341	339	365
40°	231	227	240
45°	137	134	139
50°	77	73	73
55°	44	40	39
60°	24	22	22
65°	10	8	9
70°	3	3	3
75°	2	2	2
80°	1	1	1
85°	1	1	1
90°	0	0	0

