

# E3 Flangeless Wall Wash Trims

1.0

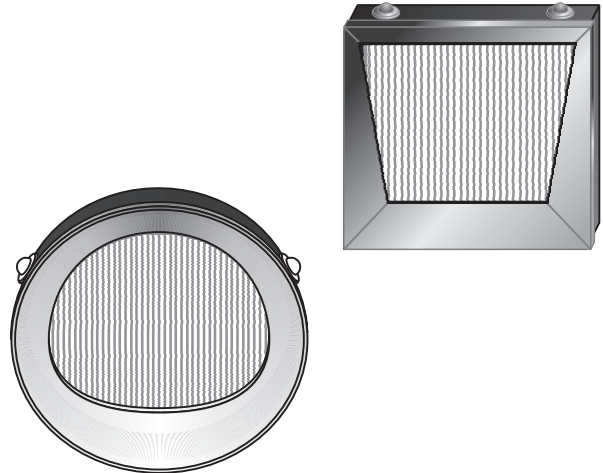
**ELEMENT**  
a brand of **TECH LIGHTING**

**FLANGELESS TRIMS**

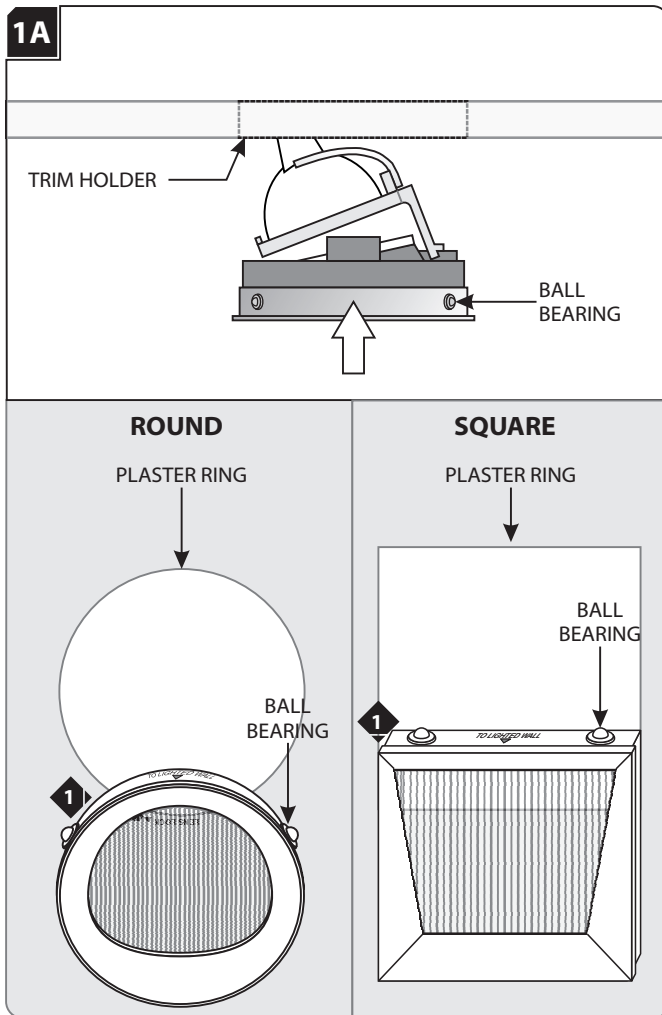
## GENERAL PRODUCT INFORMATION:

This product is suitable for indoor locations.

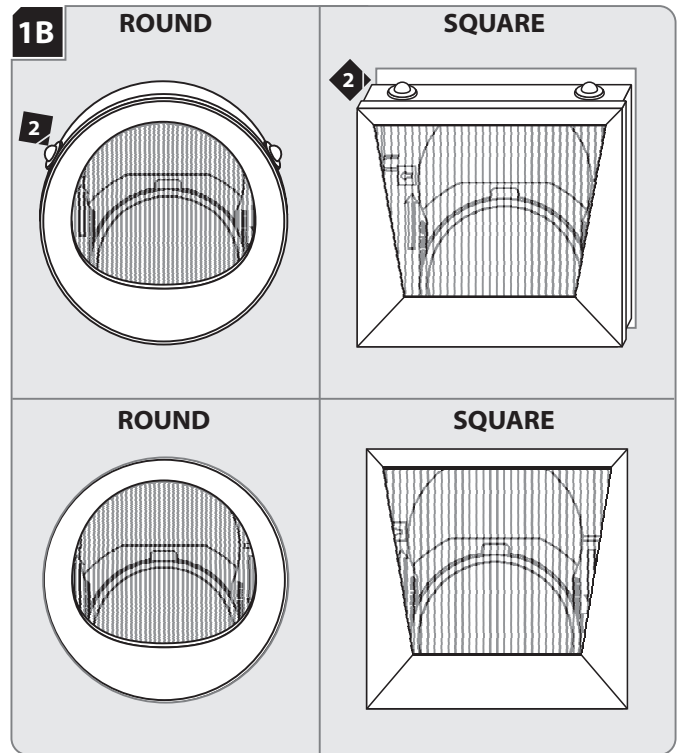
This instruction shows a typical installation.



## Install the Trim



- 1 Align the trim ball bearings with the inner edge of the plaster ring. Make sure the lamp and trim are pointed in the same direction. There are printed markings on the trim that indicate "TO LIGHTED WALL."



- 2 Push the trim into the plaster ring so that the ball bearings snap into the plaster ring walls.

**SAVE THESE INSTRUCTIONS!**

**ELEMENT**  
a brand of **TECH LIGHTING**

7400 Linder Ave.  
Skokie, IL 60077  
847.410.4400

**[www.element-lighting.com](http://www.element-lighting.com)**

© 2019 Tech Lighting, L.L.C. All rights reserved. The "Element" graphic is a registered trademark of Element. Element reserves the right to change specifications for product improvements without notification.