

Whether being used to highlight architectural elements, to accent specific features of an environment, or for use as task lighting, ELEMENT Merge 1.5 recessed track allows spot heads or pendants to be added directly into the recessed channel at any point along its concealed low-voltage bus system. ELEMENT Merge 1.5 recessed track can make 90° turns in the same plane or perpendicular transitions from ceiling to wall for enhanced architectural interest. All ELEMENT Merge 1.5 recessed track components feature a beveled aperture to integrate seamlessly with architecture for sleek ceiling-to-fixture transitions. Available in 4', 6' and 8' lengths (with a number of connector options) for flanged installation.

Key Features

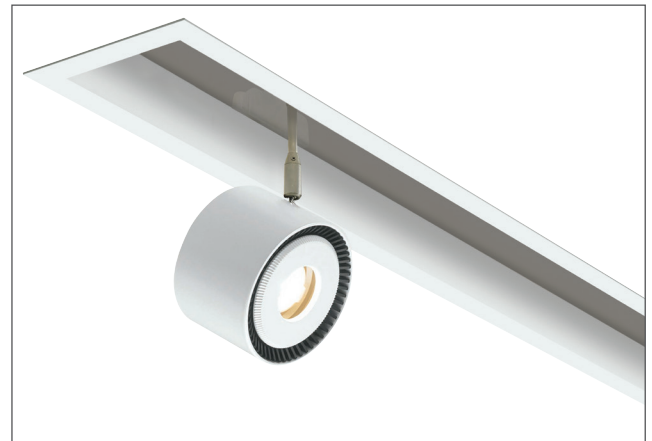
- Two spot head options: Merge Capsule and Merge Drop-Down
- Twist-and-lock design allows adjustable LED spot heads to be placed anywhere along the bus channel
- Low profile design for use in 2x4 construction
- Optional 90° horizontal turns or 90° ceiling-to-wall transitions (not available in Lay-in)
- FreeJack adapter allows the use of any Tech Lighting low-voltage head or pendant

SPECIFICATIONS

VOLTAGE	120V or 277V (Concealed 10 gauge, low-voltage bus bar, order 12-volt remote transformer sold separately)
CEILING APERTURE	1.5" beveled
CEILING APPEARANCE	Flanged (field paintable), has 4.8" width overlapping ceiling cutout
HOUSING	IC Airtight available in 4', 6' and 8'. IC suitable up to R60 spray foam insulation (Consult Quotes Department for Chicago Plenum option)
TRANSITIONS	Optional 90° horizontal turns (same plane) or 90° ceiling-to-wall
GENERAL LISTING	ETL
CONSTRUCTION	Housing: 20 gauge sheet metal Extrusion: Aluminum
HARDWARE	Steel
FINISH	White Powder Coat
WARRANTY*	1 Year*

*Visit ELEMENT-lighting.com for specific warranty limitations and details.

Notes: Typical max run length is 40' for the low-voltage bus which can be powered from both sides for a total of 80'; system wattage will impact max run length

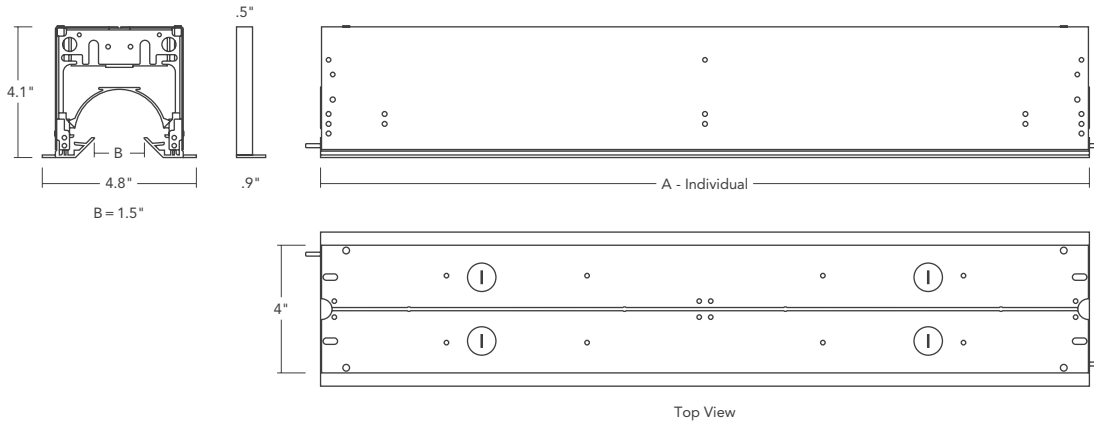


MERGE
shown flanged

MERGE™ 1.5

FLANGED RECESSED TRACK

HOUSING



DIMENSIONS

	LENGTH (A)
4' INDIVIDUAL	48"
6' INDIVIDUAL	72"
8' INDIVIDUAL	96"

Please note that end caps will add 1" to overall length of the fixture

GRIDS

LINEAR CHANNELS

SYSTEM	NOMINAL LENGTH	CEILING APPEARANCE	OUTPUT	FINISH
RLS1	4 4 FT	RF RECESSED FLANGED	0 NO INDIRECT - 12V BUS ONLY*	W MATTE WHITE
	6 6 FT			
	8 8 FT			
RLS1		RF	0	W

*TRANSFORMER REQUIRED TO ENERGIZE THE LOW-VOLTAGE BUS.

TRANSFORMERS* (REQUIRED, ORDERED SEPARATELY)

ITEM	DESCRIPTION	DIMMING
700AT060EL	ELECTRONIC, 60W, 120V	ELV
700AT152EL	ELECTRONIC, 150W, 120V	ELV
700AT152ELD010	ELECTRONIC, 150W, 120V	0-10V
700AT150T	MAGNETIC, 150W, 120V	MAGNETIC
700AT150T277	MAGNETIC, 150W, 277V	MAGNETIC
700AT302EL	ELECTRONIC, 300W, 120V	ELV
700AT300T	MAGNETIC, 300W, 120V	MAGNETIC
700AT300T277	MAGNETIC, 300W, 277V	MAGNETIC

DO NOT LOAD TRANSFORMER ABOVE 70% OF RATED LOAD DUE TO IN-RUSH CURRENT. *CONSULT SPEC. SHEETS FOR DIMENSIONS.

FINISHING KIT

SYSTEM	TYPE	STYLE	CEILING APPEARANCE	FINISH
RLS1	FK FINISHING KIT	1 CLOSED ENDCAP	RF RECESSED FLANGED	W MATTE WHITE
RLS1	FK	1	RF	W

INCLUDES 2 ENDCAPS AND ALL NECESSARY MOUNTING HARDWARE.

FLANGED WALL MOUNT PARTS KIT

SYSTEM	TYPE
RLS1	RFWK RECESSED FLANGED WALL KIT
RLS1	RFWK

LINEAR CHANNEL	BRACKETS NEEDED PER RUN*
4 FT	3
6 FT	4
8 FT	5

*FOR USE WITH UNITS BEING MOUNTED IN WALL. 1 BRACKET FOR EVERY 2 LINEAR FEET.

PROJECT INFO

FIXTURE TYPE & QUANTITY	JOB NAME & INFO	NOTES

ELEMENT
by Tech Lighting®

GENERATION BRANDS
7400 Linder Avenue, Skokie, Illinois 60077
T 847.410.4400 F 847.410.4500



© 2018 Tech Lighting, L.L.C. All rights reserved. The "Tech Lighting" graphic is a registered trademark of Tech Lighting, L.L.C. Tech Lighting reserves the right to change specifications for product improvements without notification.