

Whether being used to highlight architectural elements, to accent specific features of an environment, or for use as task lighting, ELEMENT Merge 1.5 recessed track allows spot heads or pendants to be added directly into the recessed channel at any point along its concealed low-voltage bus system. ELEMENT Merge 1.5 recessed track can make 90° turns in the same plane or perpendicular transitions from ceiling to wall for enhanced architectural interest. All ELEMENT Merge 1.5 recessed track components feature a beveled aperture to integrate seamlessly with architecture for sleek ceiling-to-fixture transitions. Available in 4', 6' and 8' lengths (with a number of connector options) for flanged installation.

Key Features

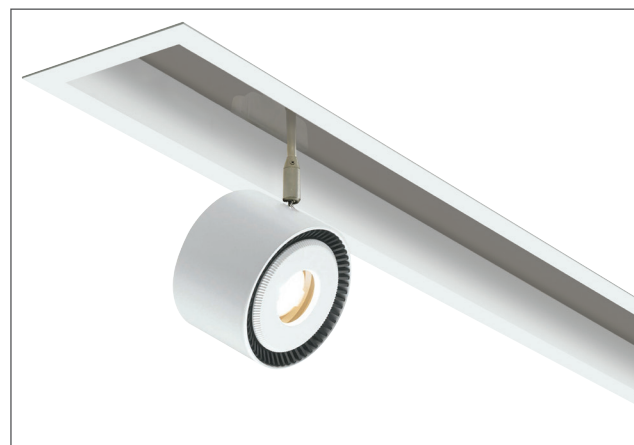
- Two spot head options: Merge Capsule and Merge Drop-Down
- Twist-and-lock design allows adjustable LED spot heads to be placed anywhere along the bus channel
- Low profile design for use in 2x4 construction
- Optional 90° horizontal turns or 90° ceiling-to-wall transitions (not available in Lay-in)
- FreeJack adapter allows the use of any Tech Lighting low-voltage head or pendant

SPECIFICATIONS

| | |
|--------------------|--|
| VOLTAGE | 120V or 277V (Concealed 10 gauge, low-voltage bus bar, order 12-volt remote transformer sold separately) |
| CEILING APERTURE | 1.5" beveled |
| CEILING APPEARANCE | Flanged (field paintable), with 4.8" width overlapping ceiling cutout |
| HOUSING | IC Airtight available in 4', 6' and 8'. IC suitable up to R60 spray foam insulation (Consult Quotes Department for Chicago Plenum option). |
| TRANSITIONS | Optional 90° horizontal turns (same plane) or 90° ceiling-to-wall |
| GENERAL LISTING | ETL |
| CONSTRUCTION | Housing: 20 gauge sheet metal Extrusion: Aluminum |
| HARDWARE | Steel |
| FINISH | White Powder Coat |
| WARRANTY* | 1 year |

*Visit ELEMENT-lighting.com for specific warranty limitations and details.

Notes: Typical max run length is 40' for the low-voltage bus which can be powered from both sides for a total of 80'; system wattage will impact max run length



MERGE
shown flanged

GRIDS

LINEAR CHANNELS

| SYSTEM | NOMINAL LENGTH | CEILING APPEARANCE | OUTPUT | FINISH |
|-------------|----------------|---------------------|-----------------------------|---------------|
| RLS1 | 4 4 FT | RF RECESSED FLANGED | 0 NO OUTPUT - 12V BUS ONLY* | W MATTE WHITE |
| | 6 6 FT | | | |
| | 8 8 FT | | | |
| RLS1 | | RF | 0 | W |

*TRANSFORMER REQUIRED TO ENERGIZE THE LOW-VOLTAGE BUS.

FINISHING KIT

| SYSTEM | TYPE | STYLE | CEILING APPEARANCE | FINISH |
|-------------|------------------|-----------------|---------------------|---------------|
| RLS1 | FK FINISHING KIT | 1 CLOSED ENDCAP | RF RECESSED FLANGED | W MATTE WHITE |
| RLS1 | FK | 1 | RF | W |

INCLUDES 2 ENDCAPS AND ALL NECESSARY MOUNTING HARDWARE.

FLANGED WALL MOUNT PARTS KIT

| SYSTEM | TYPE |
|-------------|---------------------------------|
| RLS1 | RFWK RECESSED FLANGED WALL KIT* |
| RLS1 | RFWK |

*FOR USE WITH UNITS BEING MOUNTED IN WALL, 3 NEEDED FOR 4FT WALL RUN, 5 NEEDED FOR 6FT AND 8FT WALL RUN.

TRANSFORMERS*

(REQUIRED, ORDERED SEPARATELY)

| ITEM | DESCRIPTION | DIMMING |
|----------------|------------------------|----------|
| 700AT060EL | ELECTRONIC, 60W, 120V | ELV |
| 700AT152EL | ELECTRONIC, 150W, 120V | ELV |
| 700AT152ELD010 | ELECTRONIC, 150W, 120V | 0-10V |
| 700AT150T | MAGNETIC, 150W, 120V | MAGNETIC |
| 700AT150T277 | MAGNETIC, 150W, 277V | MAGNETIC |
| 700AT302EL | ELECTRONIC, 300W, 120V | ELV |
| 700AT300T | MAGNETIC, 300W, 120V | MAGNETIC |
| 700AT300T277 | MAGNETIC, 300W, 277V | MAGNETIC |

DO NOT LOAD TRANSFORMER ABOVE 70% OF RATED LOAD DUE TO IN-RUSH CURRENT. *CONSULT SPEC SHEETS FOR DIMENSIONS.

PROJECT INFO

| FIXTURE TYPE & QUANTITY | JOB NAME & INFO | NOTES |
|-------------------------|-----------------|-------|
| | | |
| | | |

 **TECH LIGHTING**

VISUAL COMFORT & Co.

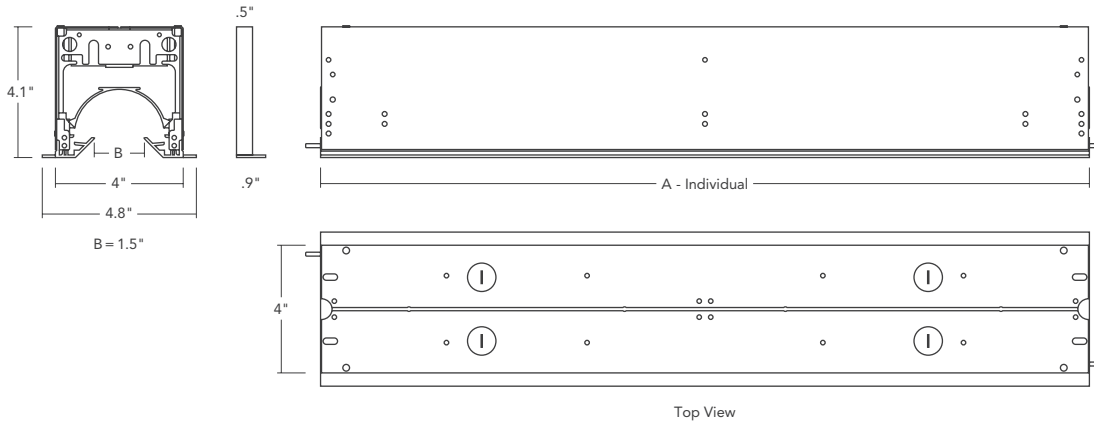
7400 Linder Avenue, Skokie, Illinois 60077

T 847.410.4400 F 847.410.4500



© 2020 Tech Lighting, L.L.C. All rights reserved. The "Tech Lighting" graphic is a registered trademark. Tech Lighting reserves the right to change specifications for product improvements without notification.

HOUSING



DIMENSIONS

| | LENGTH (A) |
|---------------|------------|
| 4' INDIVIDUAL | 48" |
| 6' INDIVIDUAL | 72" |
| 8' INDIVIDUAL | 96" |

Please note that end caps will add 1" to overall length of the fixture