

Creating a continuous uninterrupted line of beautiful, glare-free LED light, the ELEMENT Merge 3.0 recessed linear system inconspicuously puts light where it is needed without drawing attention to the fixture. The continuous line aesthetic created by the ELEMENT Merge 3.0 system is enhanced using either a specifically engineered 90° turn connector or wall-to-ceiling connector. Lines of LED light can be designed to seamlessly make 90° same-plane turns or transition from ceiling to wall for enhanced design interest while also allowing the option to add spot heads for accent and task lighting, all without adding more light fixtures to the space.

Key Features:

- Optional illuminated 90° horizontal (same plane) transitions (not available in Lay-in)
- Low profile design for use in 2x6 construction
- Dual sided illumination for even light along the channel
- 3-Step or better color binning
- Internal reflector finished with high reflectance matte white paint for even light distribution & optimal efficiency

SPECIFICATIONS

	HIGH OUTPUT	STANDARD OUTPUT
DELIVERED LUMENS	2000 lms/ft	1400 lms/ft
WATTS	28 watts/ft	18 watts/ft
EFFICACY	71 l/w (80CRI, 3500K)	78 l/w (80CRI, 3500K)
CRI	80+, 90+	
CCT OPTIONS	2700K, 3000K, 3500K, or Programmable White (2700K-4000K)	
COLOR CONSISTENCY	3-Step	
VOLTAGE	120V or 277V (Concealed 10 gauge, low-voltage bus bar, order 12-volt remote transformer sold separately)	
DIMMING	ELV (Below 1% Standard) 0-10V (Down to 5%) Lutron Hi-Lume Ecosystem Fade-To-Black or PWM (Down to 1%) eldoLED 0-10V (Down to 0.1%)	
TRANSITIONS	Illuminated 90° horizontal turns (same plane) transitions (not available in Lay-in)	
CEILING APPEARANCE	Flanged or Flangeless	
CEILING APERTURE	3" beveled aperture	
HOUSING	IC Airtight available in 4', 6' and 8'. IC suitable up to R60 spray foam insulation (Consult factory for Chicago Plenum). EM units available Non-IC only.	
POWER SUPPLY**	Constant Current (Each linear channel includes a self-contained ELV, 0-10V, Lutron Hi-Lume 2 Wire PWM (120V only) or Lutron Hi-Lume, Eco System Fade-to-Black Driver, 0-10V 1%, 0-10V 0.1%)	
CONSTRUCTION	Housing: 20 gauge sheet metal Extrusion: Aluminum	
HARDWARE	Steel	
FINISH	White Powder Coat	
GENERAL LISTING	ETL	
CALIFORNIA TITLE 24	Registered CEC Appliance Database. Can be used to comply with CEC 2016 Title 24 Part 6 (Static White, 90 CRI versions).	
LED LIFETIME	L70; 50,000 hours	
WARRANTY*	5 years	



MERGE
shown flanged

PERFORMANCE

STANDARD OUTPUT (700 LPF)

LINEAR CHANNEL	fixture OUTPUT (LMS)*	WATTAGE
4 FT	2800	36
6 FT	4200	54
8 FT	5600	72

*REPRESENTS 3500K/80CRI

HIGH OUTPUT (1000 LPF)

LINEAR CHANNEL	fixture OUTPUT (LMS)*	WATTAGE
4 FT	4000	56
6 FT	6000	84
8 FT	8000	112

*REPRESENTS 3500K/80CRI

Optional

- EM: integrated emergency battery back-up to provide illumination when main power is lost. EM battery is integrated in the Merge linear channel housing and provides 90 minutes of egress illumination. Each EM fixture ships with a test switch/indicator light.
- 4', 6', & 8' EM linear channel: 1018 total lumens (illuminates 4' section of the 8' channel)

*Visit ELEMENT-lighting.com for specific warranty limitations and details.

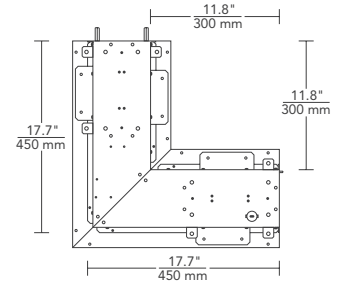
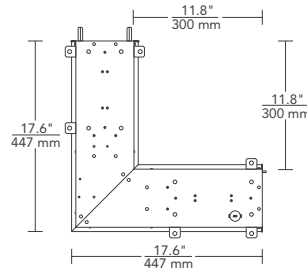
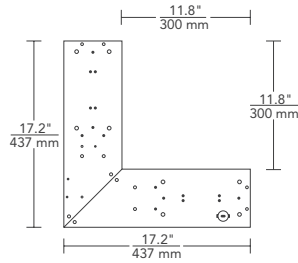
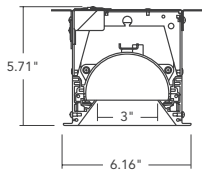
**Consult Quotes Department for additional driver options.

Max run length is 80' for the channel; typical max run length is 40' for the low-voltage bus which can be powered from both sides for a total of 80'; system wattage will impact max run length

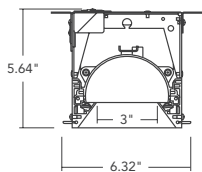
HOUSING

DIMENSIONS

FLANGED



FLANGELESS



Housing only 90° L connector (top view)
(Reference for installation)

Flanged 90° L connector (top view)

Flangeless 90° L connector (top view)

GRIDS

SYSTEM	TYPE		OUTPUT	CEILING APPEARANCE	CRI / COLOR TEMPERATURE	FINISH	CONTROLS	VOLTAGE
RLS3	L	"L" CONNECTOR	7 700 LUMENS/FT	RF RECESSED FLANGED	827 80 CRI, 2700K	W MATTE WHITE	ELV STANDARD ELV	1 120 VOLT
	LPF	"L" CONNECTOR WITH POWER FEED†	1 1000 LUMENS/FT‡	RL RECESSED FLANGELESS	830 80 CRI, 3000K		010 0-10V DIMMING	2 277 VOLT
					835 80 CRI, 3500K		ELD0 ELDOLED 0.1% 0-10V LINEAR	
					927 90 CRI, 2700K		ELD0A ELDOLED 0.1% 0-10V LOGARITHMIC	
					930 90 CRI, 3000K		ELD1 ELDOLED 1% 0-10V LINEAR	
					935 90 CRI, 3500K		ELD1A ELDOLED 1% 0-10V LOGARITHMIC	
					82740 80 CRI, PROGRAMMABLE WHITE*		HL2W LUTRON HI-LUME 2 WIRE/PWM**	
							HLECO LUTRON HI-LUME ECO-SYSTEM FADE-TO-BLACK	
							DMX DMX CONTROL	

RLS3

W

*0-10 VOLT DIMMING ONLY, NOT AVAILABLE WITH ELDOLED OPTIONS. **HL2W – TWO WIRE LOW-VOLTAGE ELECTRONIC DIMMING, 120V ONLY. †"CLOSED" CONFIGURATION REQUIRE CONNECTOR WITH POWER FEED. ‡1000 LMS/FT ONLY AVAILABLE IN STATIC WHITE & WITH STANDARD ELV AND 0-10V DRIVERS.

PROJECT INFO

FIXTURE TYPE & QUANTITY

JOB NAME & INFO

NOTES

TECH LIGHTING

VISUAL COMFORT & Co.

7400 Linder Avenue, Skokie, Illinois 60077

T 847.410.4400 F 847.410.4500



© 2020 Tech Lighting, L.L.C. All rights reserved. The "Tech Lighting" graphic is a registered trademark. Tech Lighting reserves the right to change specifications for product improvements without notification.