

Creating a continuous uninterrupted line of beautiful, glare-free LED light, the ELEMENT Merge 3.0 recessed linear system inconspicuously puts light where it is needed without drawing attention to the fixture. The continuous line aesthetic created by the ELEMENT Merge 3.0 system is enhanced using either a specifically engineered 90° turn connector or wall-to-ceiling connector. Lines of LED light can be designed to seamlessly make 90° same-plane turns or transition from ceiling to wall for enhanced design interest while also allowing the option to add spot heads for accent and task lighting, all without adding more light fixtures to the space.

Key Features:

- Optional illuminated 90° horizontal (same plane) transitions (not available in Lay-in)
- Low profile design for use in 2x6 construction
- Dual sided illumination for even light along the channel
- 3-Step or better color binning
- Internal reflector finished with high reflectance matte white paint for even light distribution & optimal efficiency

SPECIFICATIONS

| | HIGH OUTPUT | STANDARD OUTPUT |
|---------------------|---------------------------------------------------------------------------------------------------------------------------------------------------------------------------------------------|-----------------------|
| DELIVERED LUMENS | 2000 lms/ft | 1400 lms/ft |
| WATTS | 28 watts/ft | 18 watts/ft |
| EFFICACY | 71 l/w (80CRI, 3500K) | 78 l/w (80CRI, 3500K) |
| CRI | 80+, 90+ | |
| CCT OPTIONS | 2700K, 3000K, 3500K, or Programmable White (2700K-4000K) | |
| COLOR CONSISTENCY | 3-Step | |
| VOLTAGE | 120V or 277V (Concealed 10 gauge, low-voltage bus bar, order 12-volt remote transformer sold separately) | |
| DIMMING | ELV (Below 1% Standard) 0-10V (Down to 5%) Lutron Hi-Lume Ecosystem Fade-To-Black or PWM (Down to 1%) eldoLED 0-10V (Down to 0.1%) | |
| TRANSITIONS | Illuminated 90° horizontal turns (same plane) transitions (not available in Lay-in) | |
| CEILING APPEARANCE | Flanged or Flangeless | |
| CEILING APERTURE | 3" beveled aperture | |
| HOUSING | IC Airtight available in 4', 6' and 8'. IC suitable up to R60 spray foam insulation (Consult factory for Chicago Plenum). EM units available Non-IC only. | |
| POWER SUPPLY** | Constant Current (Each linear channel includes a self-contained ELV, 0-10V, Lutron Hi-Lume 2 Wire PWM (120V only) or Lutron Hi-Lume, Eco System Fade-to-Black Driver, 0-10V 1%, 0-10V 0.1%) | |
| CONSTRUCTION | Housing: 20 gauge sheet metal Extrusion: Aluminum | |
| HARDWARE | Steel | |
| FINISH | White Powder Coat | |
| GENERAL LISTING | ETL | |
| CALIFORNIA TITLE 24 | Registered CEC Appliance Database. Can be used to comply with CEC 2016 Title 24 Part 6 (Static White, 90 CRI versions). | |
| LED LIFETIME | L70; 50,000 hours | |
| WARRANTY* | 5 years | |



MERGE
shown flanged

PERFORMANCE

STANDARD OUTPUT (700 LPF)

| LINEAR CHANNEL | fixture OUTPUT (LMS)* | WATTAGE |
|----------------|-----------------------|---------|
| 4 FT | 2800 | 36 |
| 6 FT | 4200 | 54 |
| 8 FT | 5600 | 72 |

*REPRESENTS 3500K/80CRI

HIGH OUTPUT (1000 LPF)

| LINEAR CHANNEL | fixture OUTPUT (LMS)* | WATTAGE |
|----------------|-----------------------|---------|
| 4 FT | 4000 | 56 |
| 6 FT | 6000 | 84 |
| 8 FT | 8000 | 112 |

*REPRESENTS 3500K/80CRI

Optional

- EM: integrated emergency battery back-up to provide illumination when main power is lost. EM battery is integrated in the Merge linear channel housing and provides 90 minutes of egress illumination. Each EM fixture ships with a test switch/indicator light.
- 4', 6', & 8' EM linear channel: 1018 total lumens (illuminates 4' section of the 8' channel)

*Visit ELEMENT-lighting.com for specific warranty limitations and details.

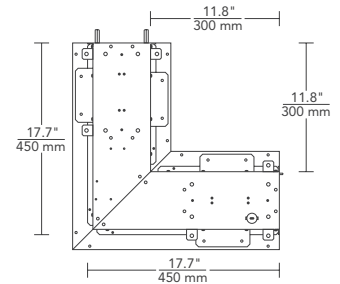
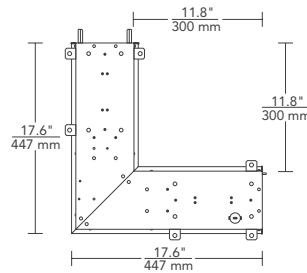
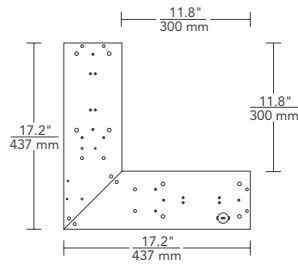
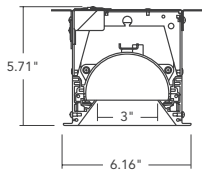
**Consult Quotes Department for additional driver options.

Max run length is 80' for the channel; typical max run length is 40' for the low-voltage bus which can be powered from both sides for a total of 80'; system wattage will impact max run length

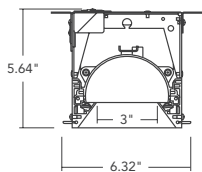
HOUSING

DIMENSIONS

FLANGED



FLANGELESS



Housing only 90° L connector (top view)
(Reference for installation)

Flanged 90° L connector (top view)

Flangeless 90° L connector (top view)

GRIDS

| SYSTEM | TYPE | | OUTPUT | CEILING APPEARANCE | CRI / COLOR TEMPERATURE | FINISH | CONTROLS | VOLTAGE |
|--------|------|--------------------------------|-------------------|------------------------|-----------------------------------|---------------|-----------------------------------------------|------------|
| RLS3 | L | "L" CONNECTOR | 7 700 LUMENS/FT | RF RECESSED FLANGED | 827 80 CRI, 2700K | W MATTE WHITE | ELV STANDARD ELV | 1 120 VOLT |
| | LPF | "L" CONNECTOR WITH POWER FEED† | 1 1000 LUMENS/FT‡ | RL RECESSED FLANGELESS | 830 80 CRI, 3000K | | 010 0-10V DIMMING | 2 277 VOLT |
| | | | | | 835 80 CRI, 3500K | | ELD0 ELDOLED 0.1% 0-10V LINEAR | |
| | | | | | 927 90 CRI, 2700K | | ELD0A ELDOLED 0.1% 0-10V LOGARITHMIC | |
| | | | | | 930 90 CRI, 3000K | | ELD1 ELDOLED 1% 0-10V LINEAR | |
| | | | | | 935 90 CRI, 3500K | | ELD1A ELDOLED 1% 0-10V LOGARITHMIC | |
| | | | | | 82740 80 CRI, PROGRAMMABLE WHITE* | | HL2W LUTRON HI-LUME 2 WIRE/PWM** | |
| | | | | | | | HLECO LUTRON HI-LUME ECO-SYSTEM FADE-TO-BLACK | |
| | | | | | | | DMX DMX CONTROL | |
| | | | | | | | | |

RLS3

W

*0-10 VOLT DIMMING ONLY, NOT AVAILABLE WITH ELDOLED OPTIONS. **HL2W – TWO WIRE LOW-VOLTAGE ELECTRONIC DIMMING, 120V ONLY. †"CLOSED" CONFIGURATION REQUIRE CONNECTOR WITH POWER FEED. ‡1000 LMS/FT ONLY AVAILABLE IN STATIC WHITE & WITH STANDARD ELV AND 0-10V DRIVERS.

PROJECT INFO

FIXTURE TYPE & QUANTITY

JOB NAME & INFO

NOTES
