

Whether being used to highlight architectural elements, to accent specific features of an environment, or for use as task lighting, ELEMENT Merge 3.0 recessed track allows spot heads or pendants to be added directly into the recessed channel at any point along its concealed low-voltage bus system. ELEMENT Merge 3.0 recessed track can make 90° turns in the same plane or perpendicular transitions from ceiling to wall for enhanced architectural interest. All ELEMENT Merge 3.0 recessed track components feature a beveled aperture to integrate seamlessly with architecture for sleek ceiling to fixture transitions. Available in 4', 6' and 8' lengths (with a number of connector options) for flanged installation.

## Key Features

- Two spot head options: Merge Gimbal and Merge Drop-down
- Twist-and-lock design allows LED adjustable spot heads to be placed anywhere along the bus channel
- Low profile design for use in 2x6 construction
- Optional 90° horizontal turns or 90° ceiling-to-wall transitions (not available in Lay-in)
- Continuous linear runs require a start unit, intermediate fixtures and end unit
- FreeJack connector allows the use of any Tech Lighting low-voltage head or pendant

## SPECIFICATIONS

VOLTAGE	120V or 277V (Concealed 10 gauge, low-voltage bus bar, order 12-volt remote transformer sold separately)
CEILING APERTURE	3" beveled
CEILING APPEARANCE	Flanged (field paintable), has 6.2" width overlapping concealing ceiling cutout
HOUSING	IC Airtight available in 4', 6' and 8'. IC suitable up to R60 spray foam insulation (Consult Quotes Department for Chicago Plenum option)
TRANSITIONS	Optional 90° horizontal turns (same plane) or 90° ceiling-to-wall
GENERAL LISTING	ETL
CONSTRUCTION	Housing: 20 gauge sheet metal Extrusion: Aluminum
HARDWARE	Steel
FINISH	White Powder Coat
WARRANTY*	1 Year*

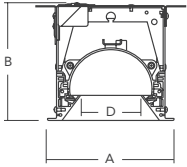
\*Visit [ELEMENT-lighting.com](http://ELEMENT-lighting.com) for specific warranty limitations and details.

Notes: Typical max run length is 40' for the low-voltage bus which can be powered from both sides for a total of 80'; system wattage will impact max run length

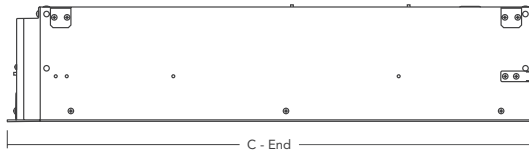
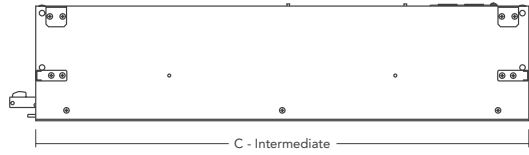
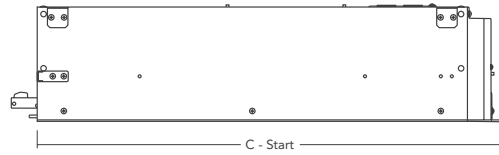
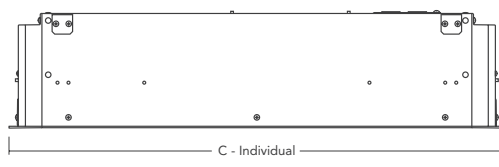


MERGE  
shown flanged

## HOUSING



D = 3.0"



## DIMENSIONS

	FLANGED		
	A	B	C
4' INDIVIDUAL	6.16	5.71	48.21
4' START	6.16	5.71	46.61
4' INTERMEDIATE	6.16	5.71	48.00
4' END	6.16	5.71	49.61
6' INDIVIDUAL	6.16	5.71	72.21
6' START	6.16	5.71	70.61
6' INTERMEDIATE	6.16	5.71	72.00
6' END	6.16	5.71	73.61
8' INDIVIDUAL	6.16	5.71	96.21
8' START	6.16	5.71	94.61
8' INTERMEDIATE	6.16	5.71	96.00
8' END	6.16	5.71	97.61

All dimensions given in inches.

