

Whether being used to highlight architectural elements, to accent specific features of an environment, or for use as task lighting, ELEMENT Merge 3.0 recessed track allows spot heads or pendants to be added directly into the recessed channel at any point along its concealed low-voltage bus system. ELEMENT Merge 3.0 recessed track can make 90° turns in the same plane or perpendicular transitions from ceiling to wall for enhanced architectural interest. All ELEMENT Merge 3.0 recessed track components feature a beveled aperture to integrate seamlessly with architecture for sleek ceiling to fixture transitions. Available in 2', 4', 6' and 8' lengths (with a number of connector options) for flangeless installation.

### Key Features:

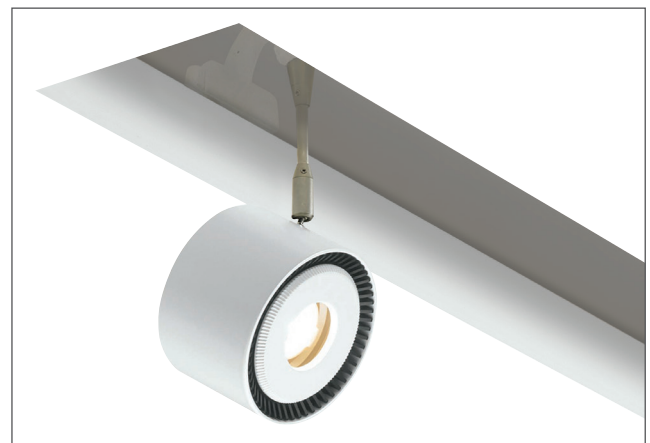
- Two spot head options: Merge Gimbal and Merge Drop-Down
- Twist-and-lock design allows LED adjustable spot heads to be placed anywhere along the bus channel
- Low profile design for use in 2x6 construction
- Continuous linear runs require a start unit, intermediate fixtures and end unit
- Optional 90° horizontal turns (same plane) or 90° ceiling-to-wall
- FreeJack connector allows the use of any Tech Lighting low-voltage head or pendant

### SPECIFICATIONS

VOLTAGE	120V or 277V (Concealed 10 gauge, low-voltage bus bar, order 12-volt remote transformer sold separately)
CEILING APERTURE	3" beveled
CEILING APPEARANCE	Flangeless, includes plaster plate, including mitered ends as needed
TRANSITIONS	Optional 90° horizontal turns (same plane) or 90° ceiling-to-wall transitions
HOUSING	IC Airtight available in 2', 4', 6' and 8'. IC suitable up to R60 spray foam insulation (Consult Quotes Department for Chicago Plenum option)
GENERAL LISTING	ETL
CONSTRUCTION	Housing: 20 gauge sheet metal Extrusion: Aluminum
HARDWARE	Steel
FINISH	White Powder Coat
WARRANTY*	1 Year*

\*Visit ELEMENT-lighting.com for specific warranty limitations and details.

Notes: Typical max run length is 40' for the low-voltage bus which can be powered from both sides for a total of 80'; system wattage will impact max run length

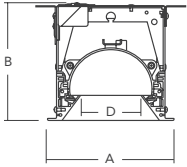


MERGE  
shown flangeless

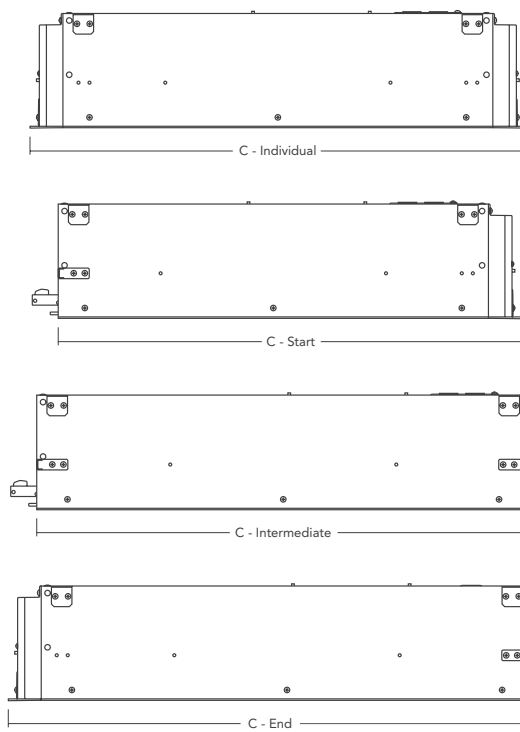
# MERGE™ 3.0

FLANGELESS RECESSED TRACK

## HOUSING



D = 3.0"



## DIMENSIONS

	FLANGELESS		
	A	B	C
2' INDIVIDUAL	6.32	5.64	24.30
2' START	6.32	5.64	22.65
2' INTERMEDIATE	6.32	5.64	24.00
2' END	6.32	5.64	25.65
4' INDIVIDUAL	6.32	5.64	48.30
4' START	6.32	5.64	46.65
4' INTERMEDIATE	6.32	5.64	48.00
4' END	6.32	5.64	49.65
6' INDIVIDUAL	6.32	5.64	72.30
6' START	6.32	5.64	70.65
6' INTERMEDIATE	6.32	5.64	72.00
6' END	6.32	5.64	73.65
8' INDIVIDUAL	6.32	5.64	96.30
8' START	6.32	5.64	94.65
8' INTERMEDIATE	6.32	5.64	96.00
8' END	6.32	5.64	97.65

All dimensions given in inches.

## GRIDS

### LINEAR CHANNELS

SYSTEM	NOMINAL LENGTH	TYPE	OUTPUT	CEILING APPEARANCE	FINISH
RLS3	2 2 FT	S START	0 NO INDIRECT - 12V BUS ONLY*	RL RECESSED FLANGELESS	W MATTE WHITE
	4 4 FT	M INTERMEDIATE			
	6 6 FT	E END			
	8 8 FT	I INDIVIDUAL			
RLS3			0	RL	W

\*TRANSFORMER REQUIRED TO ENERGIZE THE LOW-VOLTAGE BUS.

### TRANSFORMERS\*

(REQUIRED, ORDERED SEPARATELY)

ITEM	DESCRIPTION	DIMMING
700AT060EL	ELECTRONIC, 60W, 120V	ELV
700AT152EL	ELECTRONIC, 150W, 120V	ELV
700AT152ELD010	ELECTRONIC, 150W, 120V	0-10V
700AT150T	MAGNETIC, 150W, 120V	MAGNETIC
700AT150T277	MAGNETIC, 150W, 277V	MAGNETIC
700AT302EL	ELECTRONIC, 300W, 120V	ELV
700AT300T	MAGNETIC, 300W, 120V	MAGNETIC
700AT300T277	MAGNETIC, 300W, 277V	MAGNETIC

DO NOT LOAD TRANSFORMER ABOVE 70% OF RATED LOAD DUE TO IN-RUSH CURRENT. \*CONSULT SPEC SHEETS FOR DIMENSIONS.

## PROJECT INFO

FIXTURE TYPE & QUANTITY

JOB NAME & INFO

NOTES

---



---



---



---



---



---

**ELEMENT**  
by Tech Lighting®

GENERATION BRANDS  
7400 Linder Avenue, Skokie, Illinois 60077  
T 847.410.4400 F 847.410.4500



© 2017 Tech Lighting, L.L.C. All rights reserved. The "Tech Lighting" graphic is a registered trademark of Tech Lighting, L.L.C. Tech Lighting reserves the right to change specifications for product improvements without notification.