

Creating a continuous uninterrupted line of beautiful, glare-free LED light, the ELEMENT Merge 3.0 recessed linear system inconspicuously puts light where it is needed without drawing attention to the fixture. The continuous line aesthetic created by the ELEMENT Merge 3.0 system is enhanced using either a specifically engineered 90° turn connector or wall-to-ceiling connector. Lines of LED light can be designed to seamlessly make 90° same-plane turns or transition from ceiling to wall for enhanced design interest while also allowing the option to add spot heads for accent and task lighting, all without adding more light fixtures to the space.

Key features

- Seamlessly makes wall-to-ceiling transitions for enhanced design (not available in Lay-in)
- Low profile design for use in 2x6 construction
- Dual sided illumination for even light along the channel
- 3-Step or better color binning
- Internal reflector finished with high reflectance matte white paint for even light distribution & optimal efficiency

SPECIFICATIONS

	HIGH OUTPUT	STANDARD OUTPUT
DELIVERED LUMENS	2000 lms/ft	1400 lms/ft
WATTS	28 watts/ft	28 watts/ft
EFFICACY	71 l/w (80CRI, 3500K)	78 l/w (80CRI, 3500K)
CRI	80+, 90+	
CCT OPTIONS	2700K, 3000K, 3500K, or Programmable White (2700K-4000K)	
COLOR CONSISTENCY	3-Step	
VOLTAGE	120V or 277V (Concealed 10 gauge, low-voltage bus bar, order 12-volt remote transformer sold separately)	
DIMMING	ELV (Below 1% Standard) 0-10V (Down to 5%) Lutron Hi-Lume Ecosystem Fade-To-Black or PWM (Down to 1%) eldoLED 0-10V (Down to 0.1%)	
TRANSITIONS	Optional illuminated 90° ceiling-to-wall transitions (not available in Lay-in)	
CEILING APPEARANCE	Flanged or Flangeless	
CEILING APERTURE	3" beveled aperture	
HOUSING	IC Airtight available in 4', 6' and 8'. IC suitable up to R60 spray foam insulation (Consult factory for Chicago Plenum). EM units available Non-IC only.	
POWER SUPPLY**	Constant Current (Each linear channel includes a self-contained ELV, 0-10V, Lutron Hi-Lume 2 Wire PWM (120V only) or Lutron Hi-Lume, Eco System Fade-to-Black Driver, 0-10V 1%, 0-10V 0.1%)	
CONSTRUCTION	Housing: 20 gauge sheet metal Extrusion: Aluminum	
HARDWARE	Steel	
FINISH	White Powder Coat	
GENERAL LISTING	ETL	
CALIFORNIA TITLE 24	Registered CEC Appliance Database. Can be used to comply with CEC 2016 Title 24 Part 6 (Static White, 90 CRI versions).	
LED LIFETIME	L70; 50,000 hours	
WARRANTY*	5 years	



MERGE
shown flangeless

PERFORMANCE

STANDARD OUTPUT (700 LPF)

LINEAR CHANNEL	fixture OUTPUT (LMS)*	WATTAGE
4 FT	2800	36
6 FT	4200	54
8 FT	5600	72

*REPRESENTS 3500K/80CRI

HIGH OUTPUT (1000 LPF)

LINEAR CHANNEL	fixture OUTPUT (LMS)*	WATTAGE
4 FT	4000	56
6 FT	6000	84
8 FT	8000	112

*REPRESENTS 3500K/80CRI

Optional

- EM: integrated emergency battery back-up to provide illumination when main power is lost. EM battery is integrated in the Merge linear channel housing and provides 90 minutes of egress illumination. Each EM fixture ships with a test switch/indicator light for remote mounting.
- 4', 6', & 8' EM linear channel: 1107 total lumens (illuminates 4' section of the 8' channel)

*Visit ELEMENT-lighting.com for specific warranty limitations and details.

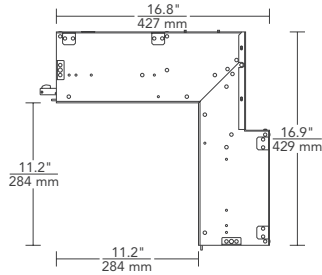
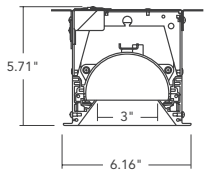
**Consult Quotes Department for additional driver options.

Max run length is 80' for the channel; typical max run length is 40' for the low-voltage bus which can be powered from both sides for a total of 80'; system wattage will impact max run length

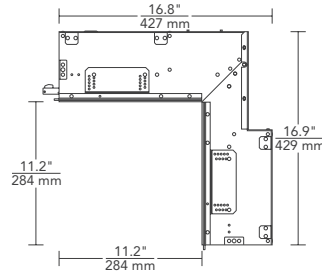
HOUSING

DIMENSIONS

FLANGED

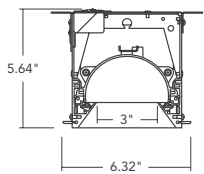


Flanged wall-to-ceiling (side view)



Flangeless wall-to-ceiling (side view)

FLANGELESS



GRIDS

SYSTEM	TYPE	OUTPUT	CEILING APPEARANCE	CRI / COLOR TEMPERATURE	FINISH	CONTROLS	VOLTAGE
RLS3	WTC WALL-TO-CEILING	7	700 LUMENS/FT	RF RECESSED FLANGED	827	W MATTE WHITE	ELV STANDARD ELV
		1	1000 LUMENS/FT†	RL RECESSED FLANGELESS	830		010 0-10V DIMMING
					835		ELD0 ELDOLED 0.1% 0-10V LINEAR
					927		ELD0A ELDOLED 0.1% 0-10V LOGARITHMIC
					930		ELD1 ELDOLED 1% 0-10V LINEAR
					935		ELD1A ELDOLED 1% 0-10V LOGARITHMIC
					82740		80 CRI, PROGRAMMABLE WHITE*
				HL2W LUTRON HI-LUME 2 WIRE/PWM*			
				HLECO LUTRON HI-LUME ECO-SYSTEM FADE-TO-BLACK			

RLS3 WTC

W

*0-10 VOLT DIMMING ONLY. **HL2W – TWO WIRE LOW-VOLTAGE ELECTRONIC DIMMING, 120 VOLT ONLY.
 †1000 LMS/FT ONLY AVAILABLE IN STATIC WHITE & WITH STANDARD ELV AND 0-10V DRIVERS.

PROJECT INFO

FIXTURE TYPE & QUANTITY

JOB NAME & INFO

NOTES

TECH LIGHTING

VISUAL COMFORT & Co.

7400 Linder Avenue, Skokie, Illinois 60077

T 847.410.4400 F 847.410.4500



© 2020 Tech Lighting, L.L.C. All rights reserved. The "Tech Lighting" graphic is a registered trademark. Tech Lighting reserves the right to change specifications for product improvements without notification.