

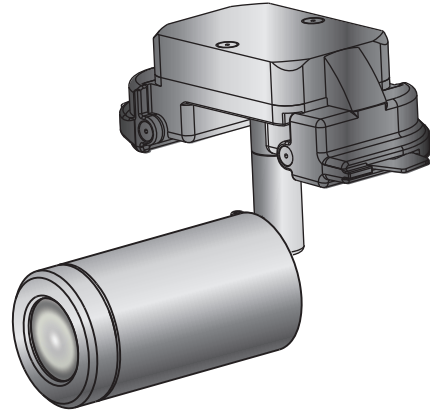
ELEMENT
a brand of TECH LIGHTING™

GENERAL PRODUCT INFORMATION:

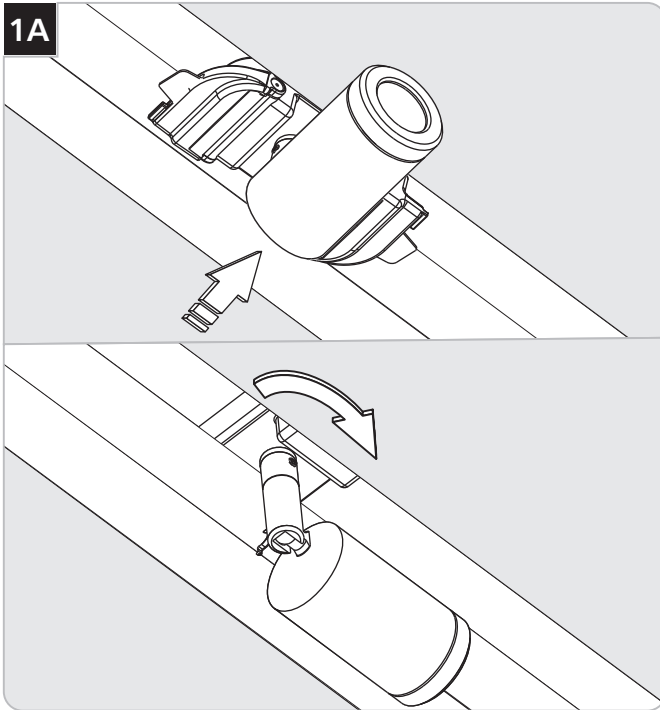
This product is suitable for dry locations.

Maximum loading of the low-voltage busbar is 240W (20 AMPS).

Maximum one spot per foot of linear panel.

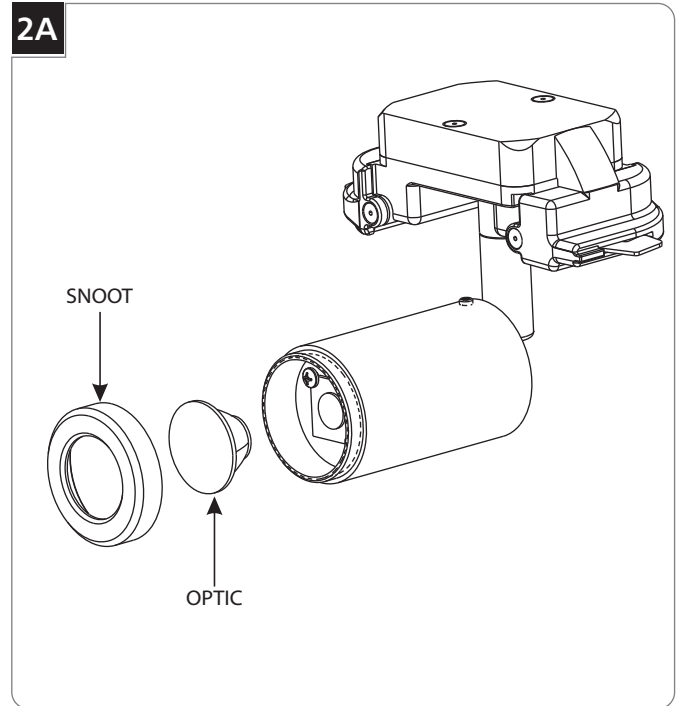


Install Modules



- 1 Install the capsule into the fixture channel at the desired location and rotate it 90° into place.

Replace/Install Optics



- 1 Unscrew and remove the snoot.
- 2 Remove the optic.
- 3 Install the optic inside the snoot.
- 4 Screw the snoot back on.

SAVE THESE INSTRUCTIONS!

ELEMENT
a brand of TECH LIGHTING™

7400 Linder Ave.
Skokie, IL 60077
847.410.4400

www.element-lighting.com

© 2019 Tech Lighting, L.L.C. All rights reserved. The "Element" graphic is a registered trademark of Element. Element reserves the right to change specifications for product improvements without notification.